



---

[Home](#)   [Contact](#)   [Info](#)   [Map](#)   [Search](#)

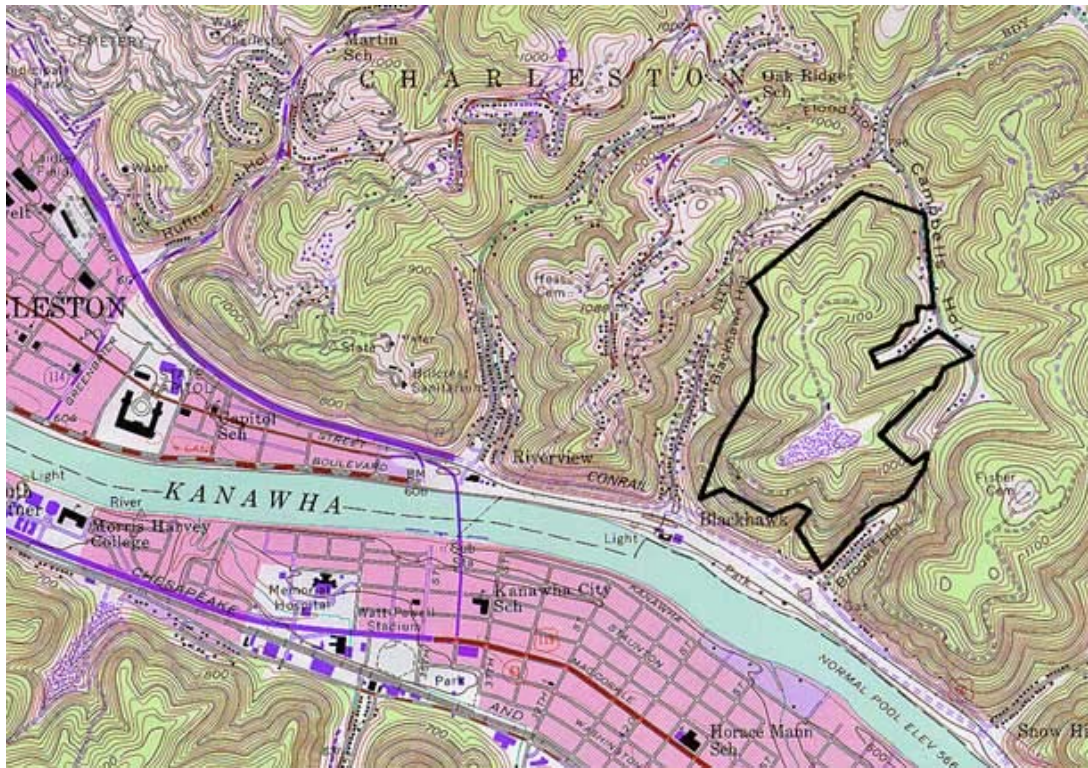
---

## West Virginia Development Office

### Washington Heights Business Park

---





**Location**

City :	Charleston
County :	Kanawha
Miles To Nearest Interstate Or 4 Lane Highway:	4.0
Miles To Nearest Commercial Airport:	7.0
Rail Access :	None
Navigable Waterways:	None

**Size and Utilities**

Total Park Acreage :	195.0
Available Acreage :	175.0
Contiguous Acreage :	45.0
Electric :	Appalachian Power Company
Water :	West Virginia American Water
Gas :	Mountaineer Gas Company
Sewer :	City of Charleston

**Contact Information**

Name :	Katherine F. Wellford
Company :	Corotoman, Inc.

<b>Address :</b>	One Wellford Way Charleston, WV 25311
<b>Phone :</b>	(304) 346-2900
<b>Fax :</b>	(304) 346-3798
<b>Email :</b>	None Available

[BACK](#)

---

Capitol Complex, Bldg. 6, Rm. 553 1900 Kanawha Blvd. E, Charleston, WV 25305-0311  
Tel: 800.982.3386 304.558.2234 Fax: 304.558.0449

---

[Welcome to WV](#) | [Business Assistance](#) | [Real Estate](#) | [Small Business](#) | [International](#) | [Workforce Development](#)  
[Community Matters](#) | [Media Center](#) | [Tourism Development](#) | [Who We Are](#)