



[Home](#)

[Contact](#)

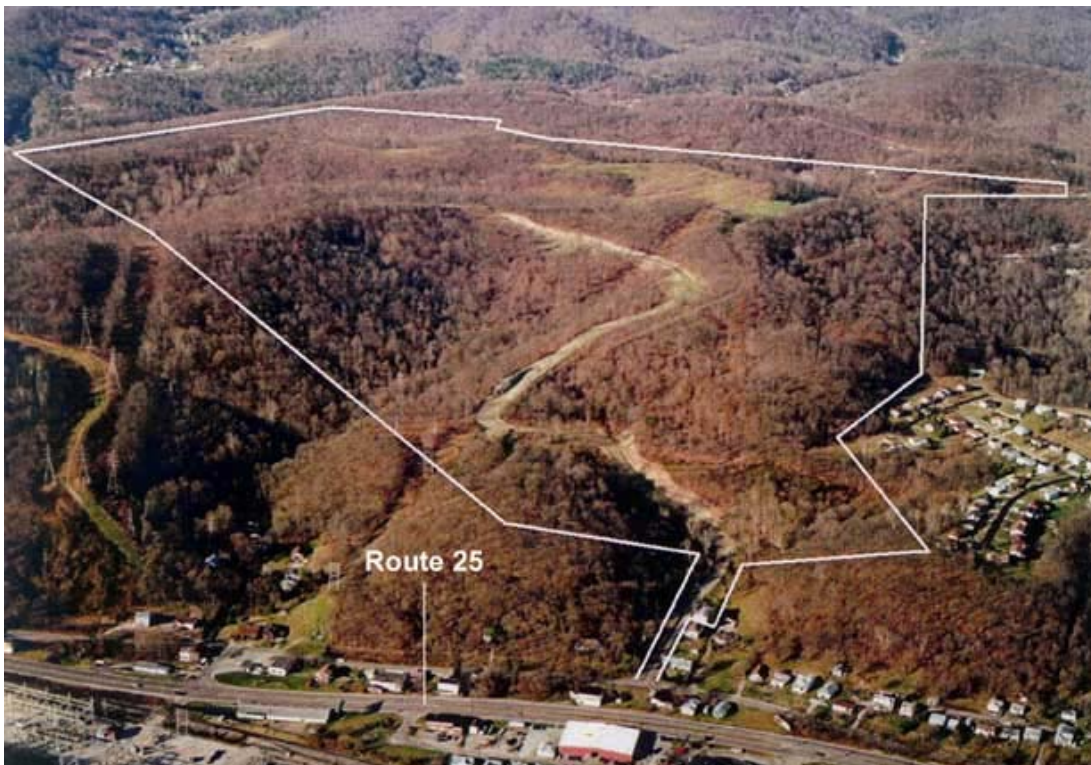
[Info](#)

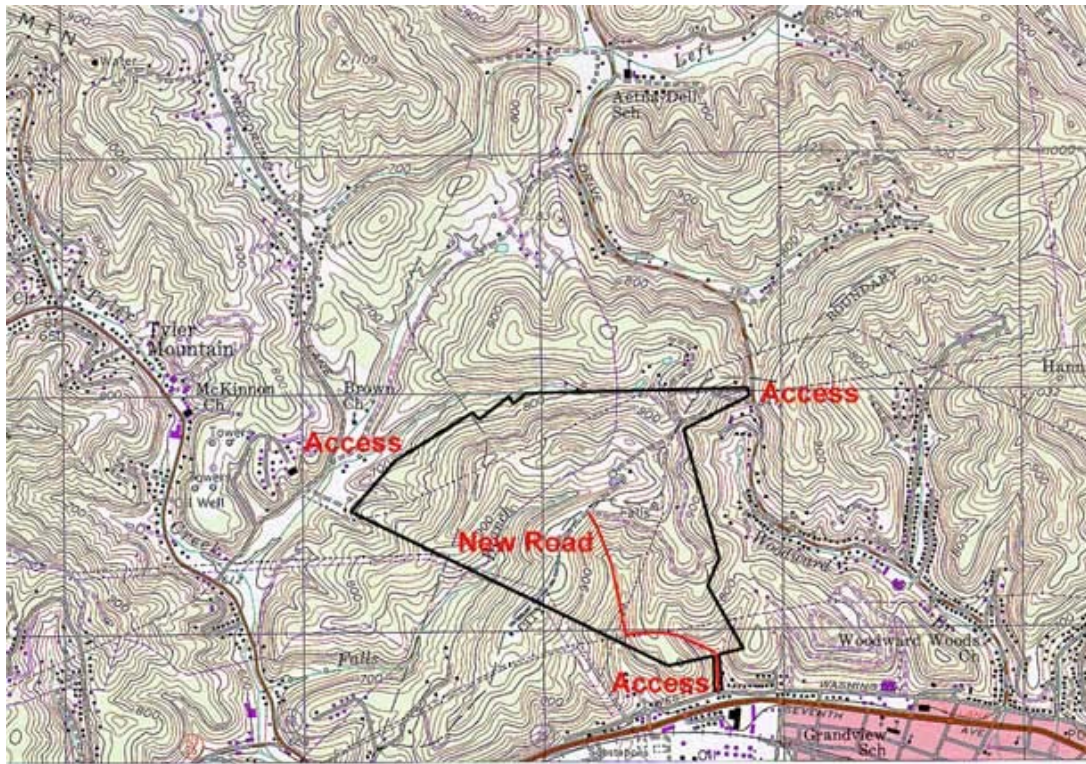
[Map](#)

[Search](#)

## West Virginia Development Office

### Worley Site





**Location**

City :	Charleston
County :	Kanawha
Miles To Nearest Interstate Or 4 Lane Highway:	3.0
Miles To Nearest Commercial Airport:	9.0
Rail Access :	None
Navigable Waterways:	None

**Size and Utilities**

Site Acreage :	280.0
Electric :	Appalachian Power Company
Water :	West Virginia American Water
Gas :	Mountaineer Gas Company
Sewer :	City of Charleston

**Contact Information**

Name :	Archie Chestnut
Company :	Chestnut Properties
Address :	PO Box 746 Charleston, WV 25323- 0746

Phone :	(304) 345-2724
Fax :	(304) 344-0074
Email :	<a href="mailto:archiechestnut@verizon.net">archiechestnut@verizon.net</a>

[BACK](#)

---

Capitol Complex, Bldg. 6, Rm. 553 1900 Kanawha Blvd. E, Charleston, WV 25305-0311  
Tel: 800.982.3386 304.558.2234 Fax: 304.558.0449

---

[Welcome to WV](#) | [Business Assistance](#) | [Real Estate](#) | [Small Business](#) | [International](#) | [Workforce Development](#)  
[Community Matters](#) | [Media Center](#) | [Tourism Development](#) | [Who We Are](#)